

# Mapping Education

---

Louisa County Historical Society and Sargeant Museum

In partnership with Virginia Geographic Alliance

Digital Mapping is an *AWESOME* integration  
tool for educators!

---

She says with great enthusiasm and authority....

# My Background...

---

- Commonwealth's Groundwater Resource Expert
  - Maps to communicate complex models
- Henrico County Division of Fire
  - Maps to plan safer communities
- Louisa County History
  - Maps to recover history
- Virginia Public School Science Teacher – 1986-1990

# Accommodates Diverse Styles

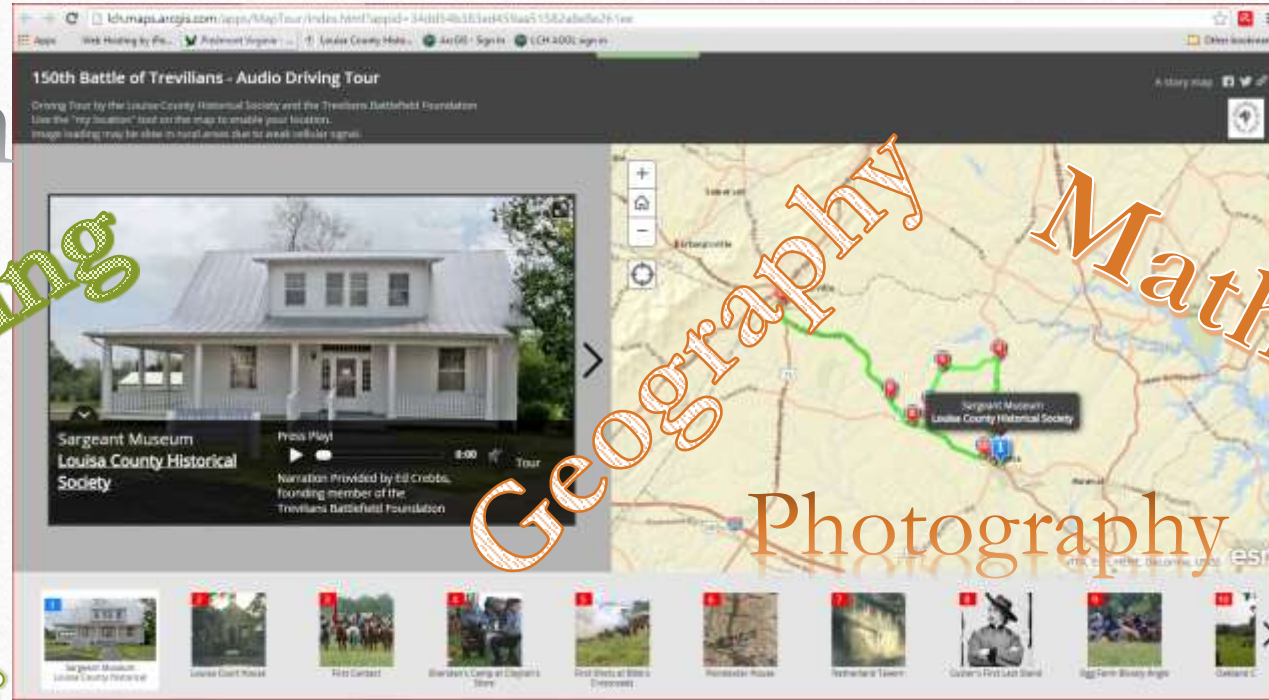
---

- Way to meet SOLs while encouraging discovery and cultivating problem solving skills.
- Way to design lessons with obvious enrichment options for faster learners.
- Kids who love word problems can become team leaders for collaborative GIS projects.
  - The artist can lead design.
  - The readers can lead research.
  - The writers can develop content.
  - The gamer can figure out how the code can be adapted.

Research

Marketing

Music



Geography

Math

Photography

C  
o  
d  
i  
n  
g

150th Battle of Trevilians - Audio Story Map

# Two Options for ESRI ArcGIS

---

- **Enterprise School District license**

- Based on the number of high schools in the County
- Administered by JMU
- School Administration can use enterprise license too.
- \$250 for 1-4 high schools

- **ArcGIS Online School Organizational Account**

- Cloud services for “GIS lite”
- Available to every school in the U.S.
- Students have individual named user accounts
- FREE



# ArcGIS Online Organizational Account

Cloud-based services and storage, web page interface works on any platform.

“Named User Accounts” can create, store and share information with other organizational users and the public.

Can be deployed to smartphones for GPS-enabled data collection.

Increasing catalog of templates and mobile apps.

[ESRI's ConnectED Program](#)





# Let's look ...

Map Services and Layers

Web Maps

Web Apps

Mobile Apps



**ArcGIS App for Smartphones and Tablets**

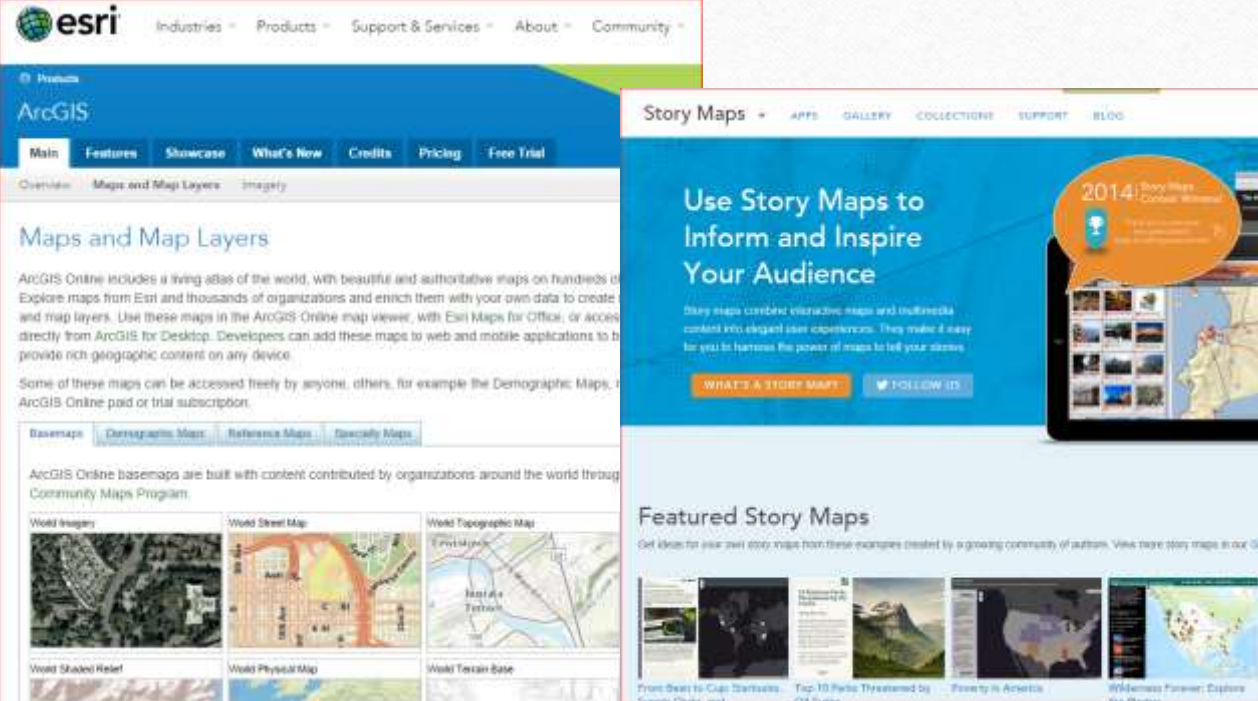
Discover what you can do with the ArcGIS app on desktop, iOS, and Android. Tap to map to see our content, explore and get information about our apps.

**Key Features**

- Navigate, map, explore and get a better view
- Explore our GIS data
- Display and explore the information
- Explore our GIS data
- Access our content and get access to ArcGIS services

Get started with the ArcGIS App

Check out the ArcGIS Marketplace where you can see all apps included with your ArcGIS Online subscription and discover premium apps that you can add to your subscription.



**esri** Industries Products Support & Services About Community

**ArcGIS**

Main Features Showcase What's New Credits Pricing Free Trial

Overview Maps and Map Layers Imagery

### Maps and Map Layers

ArcGIS Online includes a living atlas of the world, with beautiful and authoritative maps on hundreds of Explore maps from Esri and thousands of organizations and enrich them with your own data to create and map layers. Use these maps in the ArcGIS Online map viewer, with Esri Maps for Office, or access directly from ArcGIS for Desktop. Developers can add these maps to web and mobile applications to provide rich geographic content on any device.

Some of these maps can be accessed freely by anyone, others, for example the Demographic Maps, ArcGIS Online paid or trial subscription.

Basemaps Demographic Maps Reference Maps Specialty Maps

ArcGIS Online basemaps are built with content contributed by organizations around the world through Community Maps Program.

World Imagery	World Street Map	World Topographic Map
World Shaded Relief	World Physical Map	World Terrain Base

### Story Maps

Use Story Maps to Inform and Inspire Your Audience

2014! Story Maps Contest Winner

Story maps combine interactive maps and multimedia content into elegant user experiences. They make it easy for you to harness the power of maps to tell your stories.

WHAT'S A STORY MAP? FOLLOW US

### Featured Story Maps

Get ideas for your own story maps from these examples created by a growing community of authors. View more story maps in our Gallery.

From Swine to Cows: Swine flu	Top 10 Parks Threatened by Climate Change	Poverty in America	Wilderness Forever: Explore the Past
-------------------------------	-------------------------------------------	--------------------	--------------------------------------

## Jack and Sally Examples from LCH.maps.arcgis.com

---

**You will need your own ArcGIS Online account to make and save your own maps.**

Anyone can create a free personal account.

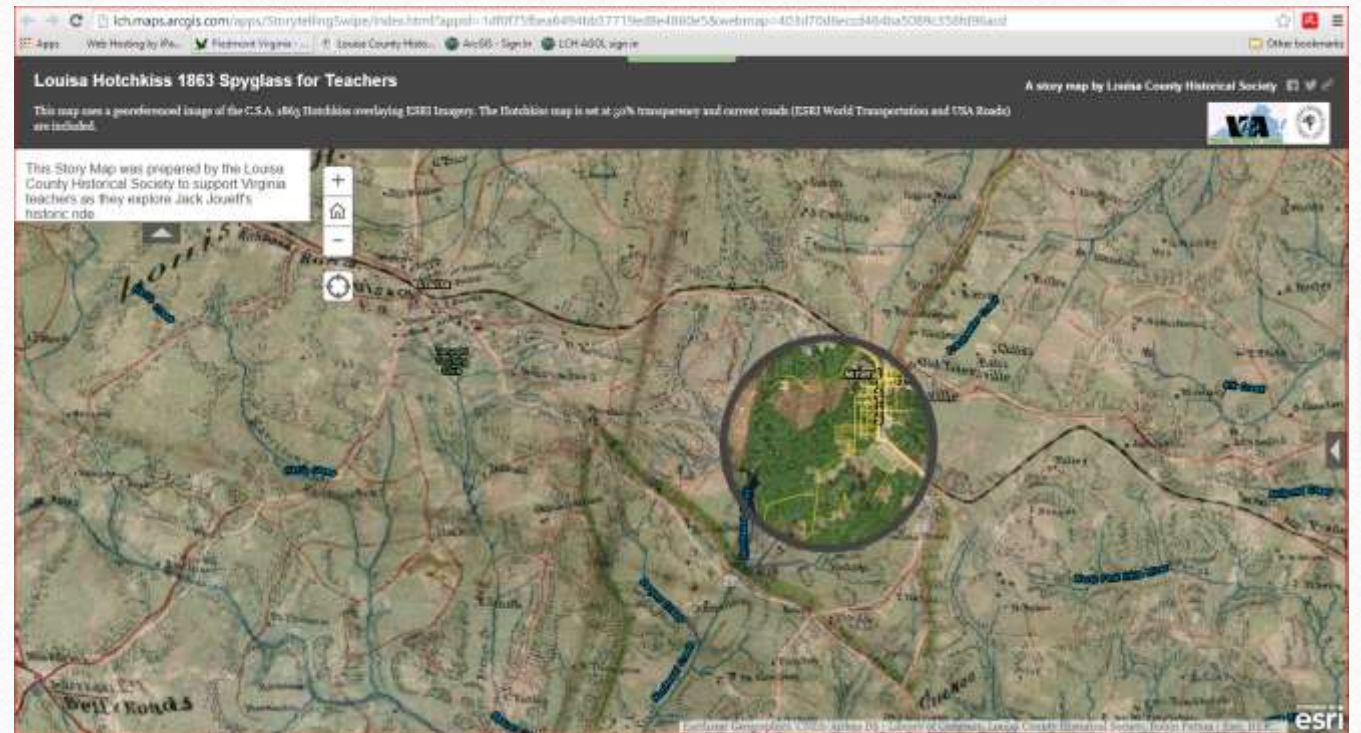
US Public Schools can create free organizational accounts with more access to data and apps!



## Louis Hotchkiss 1863 Spyglass Story Map

With this story map (whether or not you have an ArcGIS user account) you can ‘spy’ modern roads through the linen 1863 map.

Can you find a modern road that matches the path Jack and Sally might have taken in 1781?



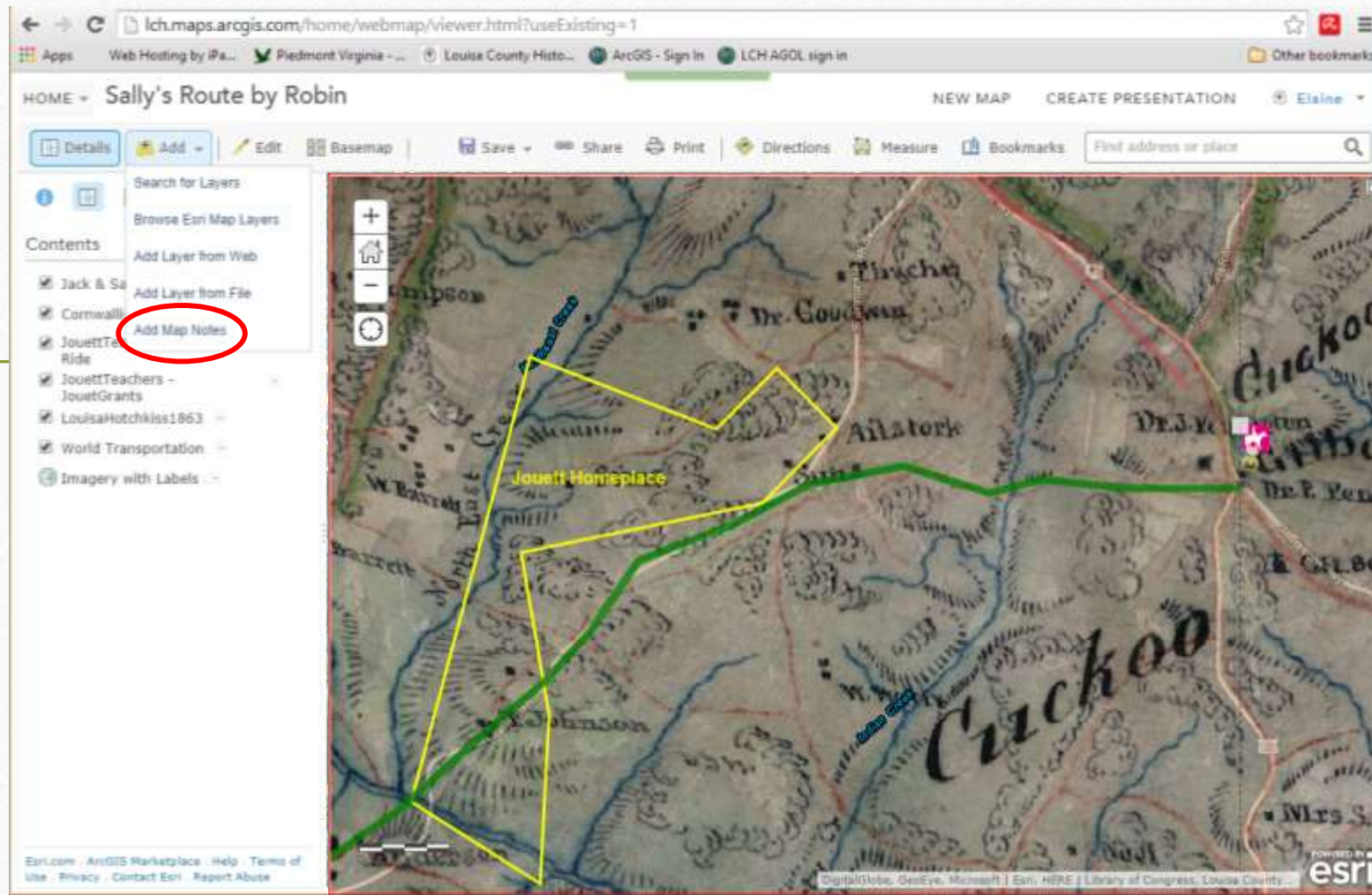
Students can create their own version of Jack & Sally's ride...

Create your own AGOL account.

Login and navigate to the "Sally's Route by Robin" map

Modify and Save the map as your own "Sally's Route by Me"

ADD Map Notes and select line to click your path through the map...



# Links

---

- JMU – Katie LaPira, P-12 Engagement Coordinator ([lapirakm@jmu.edu](mailto:lapirakm@jmu.edu))
- ESRI ConnectED: <http://edcommunity.esri.com/Resources/connectED>
- ESRI K12 Org: <http://k12statelicense.maps.arcgis.com/home/>
- ESRI Free OnLine Teacher Training: [Course Detail](#)
- Louisa County Historical Society: <http://lch.maps.arcgis.com/home/> and <http://www.louisacountyhistoricalsociety.org/default.htm>
- Robin Patton, [rwpatton@alumni.Virginia.edu](mailto:rwpatton@alumni.Virginia.edu)