

Pyrite Mining in Louisa County¹

Pyrite Min

The pyrite deposits of Louisa County are situated near Mineral City, formerly known as Tolersville, a station on the Chesapeake and Ohio Railway, and include the mines, two of which are extensively operated at present. The mines are located N. E. from Mineral City at a distance of from 1.5 to 3.4 miles. Named in order of nearness to the station these are: the Arminius, Smith and Sulphur Mines. The pyrite belt is crossed by the Chesapeake and Ohio Railway to the west of Mineral City and has been prospected for a distance of ten miles southwest of the Arminius Mine, about 8.5 miles southeast of Mineral City. Nothing, however, that seemed profitable in pyrite concentration has been found south of the railroad. A goodly number of pyrite mines have been worked at different points in the belt. The Louisa County pyrite mines were worked at different times for iron, copper, and pyrite. They were first opened and worked for iron in 1834 when the gossan or limonite cap, overlying the pyrite to a depth of from 40 to 60 feet, was mined for iron-making in the blast furnaces. The gossan at the Arminius Mine was practically exhausted in 1861. The Sulphur Mines were worked during the Civil War. The gossan ore mined on the Arminius property is reported to have been furnaced in the old Rough and Ready Furnace, located about 1.5 miles north of Tolersville, now Mineral City; the ore from the Sulphur Mines was furnaced in the Victoria Furnace situated on the present mine property. Both of these furnaces are now entirely destroyed.

The Arminius Mine was opened for copper as early as 1847. It was operated for copper at a later date and prior to the mining of pyrite by the Virginia Central Copper Mines Company; and at a still later date, by the Arminius Copper Mine Company. The total production of copper from the Louisa County mines is reported as not being large, and represented chiefly ores of secondary enrichment beneath the gossan at the surface of the pyrite.

Arminius Mines

This mine is located about 1.5 miles N 20 E of Mineral City and has been variously worked for iron, copper, and pyrite since 1834. Pyrite mining was begun at a much later date, 1856, after the working off of the iron cap or gossan ore. The mine has been constantly worked for pyrite for 23 years. The ore-bodies are quite extensive and they conform to the structure of the enclosing schists, with local changes in the strike and dip of the ore-lenses and the rock. Both hard lumps and friable ore are mined, only the latter being milled, which is old as "fine." The lump ore is cobbled and not milled. The ore is massive-granular, the individual pyrite grains largely possessing a crystal form, cubes and their crystallographic modifications. White granular calcite is the most abundant gangue mineral, with some quartz and less dark green hornblende.

The Arminius Mines of today is untold benefit to Louisa County, as they employ some three or four hundred men and their pay roll per month amounts to many thousands of dollars, besides the large amount of tax and the many men employed. The surface plant of the Arminius Mines is large and commodious and is well equipped with all necessary machinery for the mining and milling of pyrites. I believe that the machinery at these mines will compare favorably with any mine of its kind in the country. The total output of ore from this mine is utilized for the manufacture of sulfuric acid. The average sulphur content of the ore shipped from this mine is from 43-44 per cent.

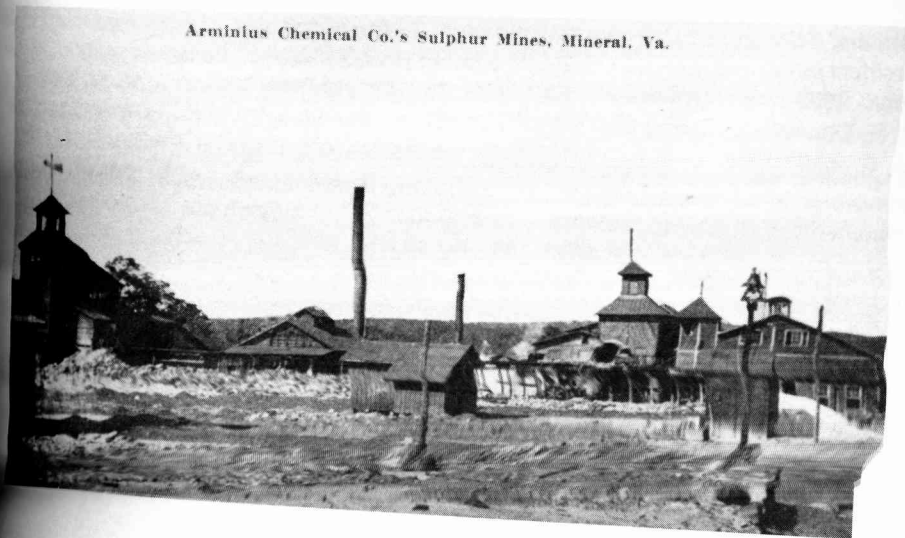


Louisa
Arminius
mine pyrite
all other
Officers:
J. Frederic
Samuel L.
Henry H.
George A.
George P.
Lyman W.
Frederick

The S
Fidelity a
a mile N.
operations
opened ab
being 300
following
of excellen
comprises

Louisa Co
21 Ma
milling, co
buying, se
lead, zinc,
and deal i
to conduc

Arminius Chemical Co.'s Sulphur Mines, Mineral, Va.



Arminius Mines

Louisa County Corporations Charter Book p. 113:

Arminius Chemical Co., Inc. Office at Arminius Mines near Mineral, Va. Purpose- To mine pyrites and sulphur ore, market such ores, open and operate a commissary and other things convenient to mining. Stock maximum \$10,000, minimum \$5,000.

- Officers:
- Frederick Kincannon, president and director 11 E. 26th St., New York
 - Samuel Lee - treasurer, Mondale, New Jersey
 - Harry H. Mann - secretary, New York
 - George Albert Wingate - director, Brooklyn, New York
 - George P. Hill - director, Ridgewood, New Jersey
 - Samuel Ward - director, Nyack, New York
 - Frederick Kerouchan - vice president, New York

Smith Mines

The Smith Mine now owned by the Mining Department of the United States and Guaranty Company of Baltimore, Maryland is located three-quarters of a mile N. 20 E. from the Arminius Mine. This mine is not being worked at this time, operations suspended pending litigation. The mine is reported to have been first discovered about 1886. It has been developed by 3 shafts and numerous drifts, the deepest about 300 feet, the other two 100 feet and more in depth. Ore has been mined on the following levels: 100, 150, 200, 250, 300 feet. The ore at this mine is of friable type and excellent quality of which a large total output has been produced. The surface plant consists of a mill and all the necessary machinery for pyrite mining and milling.

Louisa County Corporations Book p. 138

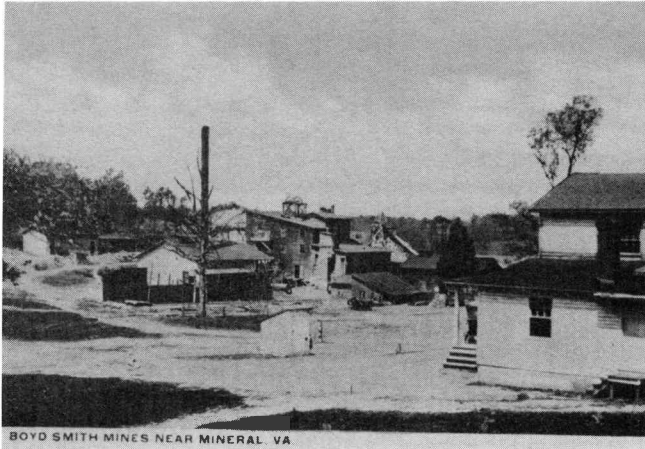
March 1913 - Boyd Smith Mines, Inc. located in Mineral, Va. Purpose of mining, concentrating, converting, smelting, treating, preparing for market manufacturing, selling, exchanging and otherwise producing and dealing in gold, silver, copper, iron, brass, iron, steel and all kinds of metals. To buy, sell, exchange, acquire, hold, lease, and convey lands and mineral rights. To purchase, build, lease, houses, store buildings; to conduct a general mercantile business to produce, raise, purchase, and sell all garden

farm and dairy products, to construct maintain and establish and operate water works and electrical power and maintain roads. Maximum stock \$3000.000, minimum \$100,000, real estate 5,000 acres. Officers:

R. A. Dunlap - president, Richmond, Virginia

Thomas C. Gordon - secretary and treasurer, Richmond, Virginia

Directors: R. A. Dunlap, Thomas C. Gordon, Stuart G. Christian, Robert A. Perry, Philadelphia, Russell I. Hubbard, Philadelphia.



BOYD SMITH MINES NEAR MINERAL VA

Boyd Smith Mine

The Sulphur Mine

The Sulphur Mines are located 2 miles northwest of the Arminius Mine and 3 three miles northeast of Mineral City. The mines are connected with the Chesapeake and Ohio Railway at Mineral City by a broad-gauge steam road, built in 1884. The gossan or minonite cap was first mined and furnaced prior to the Civil War in the old Victoria Furnace on the present company's site, which was closed in 1877. Mining of pyrite was begun in 1882.

The property is developed by 8 shafts, which were working in August 1906 (it may be more at present time). The greatest depth attained in the working of these shafts is 720 feet. The method of mining the ore is closely similar to that employed at the Arminius Mine.

Many old cuts are now exposed from which the gossan ore was early mined. Several of these afford opportunity for observing the ore-bodies and their relations to the enclosing rocks.

The mineral associations are the same here as at the Arminius Mine. Judging from a careful examination of the dumps chalcopyrite, pyrotite, and probably magnetite, are somewhat more abundant than at the Arminius Mine, and calcite seems to have considerably greater development at the Sulphur Mine.

Both hard and friable ore are produced, the latter existing in largest quantity. At present, only the low grade ore is milled. The milling scheme is closely similar at the two mines except at the Sulphur Mines trommels and tables are used. The fine and coarse ore are separated at the tipple and all ore goes to the washer. The concentrates

average 4
the manu

The
equipped
mill. I un
last year
County bo
runs up ir
is a big so



1. Copy
Louisa Co

ARM
REDUCT
TEN SUIT

HUMBER DRE
low prices which
NOTION. We
starting moving
these goods to ed

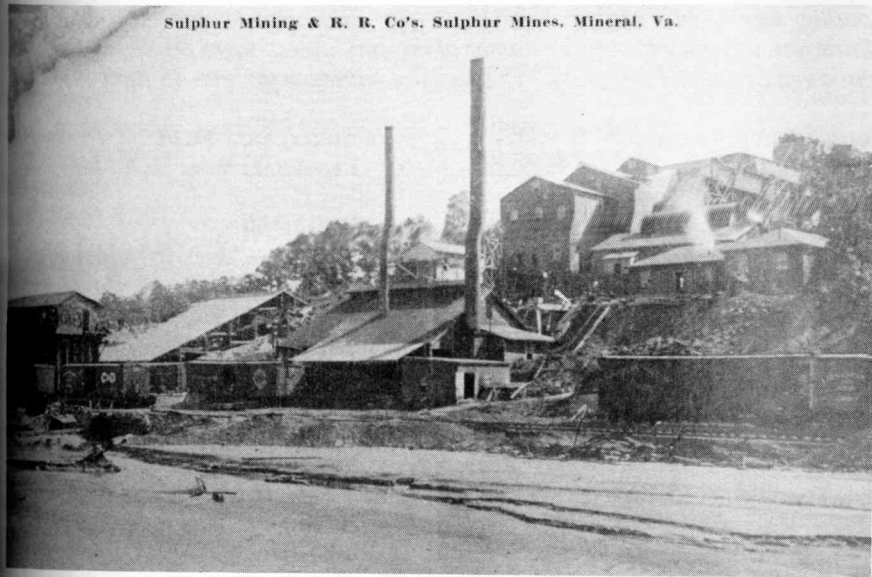
The stock of Dr
ederal new ap
We have no

THE

azine
and
real
rry,

average 42 percent of sulphur. three sizes of ore are shipped, all of which is used in the manufacture of sulfuric acid.

The Sulphur mines surface plant is very large and commodious and is well equipped with all necessary equipment for handling the ore in the mines and at the mill. I understand they have made extensive improvement in their surface plant in the last year or two. The Sulphur Mines not unlike the Arminius is a great benefit to our County besides the employment of some three or four hundred men and they pay roll runs up in the thousands per month. The tax paid to the county by the Sulphur Mine is a big source of revenue.



Sulphur Mine

Copy of a letter from Jesse J. Porter, Clerk of the Louisa, 31 December, 1912, from the files of the Louisa County Historical Society Museum.

ARMIUS - - MINES.

REDUCTION SALE PRIOR TO INVENTORY.

NEW SUITS OF MENS' CLOTHING, former price, \$5, \$6, \$7
OUR PRICE NOW, \$3, \$3.50 and \$4.

WOMEN'S DRESS GOODS will be offered at a general reduction of 25 per cent from the prices which have prevailed heretofore.
We are desirous of reducing our large stock of NOTIONS, as we have some long samples in hand for the fall trade, and will have a bargain counter to show goods at advantage with prices which you cannot resist.

Medical Department.

Stock of Drugs and Special Remedies which we always carry, has been augmented by the latest specialties for summer complaints, etc.

Save and Cheap Goods, but hold to cheap prices for best of goods

THE ARMIUS CHEMICAL CO.

Mineral City, Virginia.

Miners Wanted

AT THE

ARMIUS : MINES.

Steady employment and good wages paid for all classes of laborers at these mines. 2-16-6m.

ARMIUS COPPER MINES.

No. 113 Month of AUG 1899

NAME Keblinger H K

<u>23</u> Days' Labor @ \$	\$ 1		\$ 2.30
DUE FOR Doctor,		2.00	
Rent,			
Store Account,		11	
Cash,			
Balance,		12.25	
TOTALS,	\$		\$ 2.30