

MINERAL CITY GOLD

Mineral, Virginia

The Virginia Reduction Works and Mining Company issued a prospectus or promotional pamphlet in 1896 to describe the investment potential in mining operations around the present town of Mineral. Mrs. Mary C. Goodling of Mineral possesses an original copy of the pamphlet. Only pictures and a map of the area encompassing the mines have been omitted from the content of the pamphlet presented below.

Mineral City

Most aptly named is this mineral centre of one of the richest belts in the Appalachian formation. Not only is the variety almost unequaled in any other locality within a similar radius, but the fact of paying quantity has been demonstrated by many years of continued output. It will be news to most of those whose attention will be called to this subject that this small village is reckoned fifth, in the matter of freight revenues, among all the great Chesapeake and Ohio Railway system's receiving points. The annual tonnage of freight loaded at Mineral City is about 100,000 tons, which yields to that company a freight revenue of nearly \$150,000. This average has been maintained for over five years past. The specimens of free gold exhibited from this section at the Centennial Exhibition, Philadelphia, 1876, were pronounced the richest ever shown. Pyrites of iron and copper; ores carrying paying quantities of silver, copper, and lead, are only a few of the mineral contributions from this narrow circle, included within the mineral wheel whose hub is Mineral City.

The Walton Gold Mine

The famous "Walton" Gold Mine's record for an enormous output from very shallow workings in earlier days gave to Virginia much of her prestige as a gold-producing State. It was from this mine that samples were selected which attracted so much notice at the Philadelphia Centennial Exhibition, and secured the highest award.

Hundreds of thousands of dollars are known to have been taken from this mine at a depth not exceeding 120 feet. Good judges have pronounced that the old dumps from the various workings in this mine, with the area of gulch placer which lies below it, will return at least \$100,000 to the company which will work the property this year. Litigation, which long prevented any working of its rich depths, has now been settled, and the new owners will proceed at once to develop its old workings, as well as the surface ores now exposed. All the wealth of this former "Bonanza" will filter through the channels of reduction and extraction at Mineral City.

The Luce Gold Mine

Prominent among the many noted producers in Louisa county, none of which are more than five miles distant from the heart of Mineral City, is the "Luce" Mine, now the property of the "Old Virginia Gold-Mining Company." The mill-house on this property is but half a mile from the railway station. Its main shaft, 220 feet deep, is one of the lowest workings in Virginia. About \$100,000 was secured in two years of crude working by old-fashioned methods. Four veins, each nearly one-half mile in length, traverse the whole property. The main vein is from 3½ to 6 feet in width. Assays of ores from the various veins, by many different metallurgists of high standing, show respectively: \$16, \$29, \$84, and, in an exceptional case, \$3,300 per ton. As the lower levels are reached, iron sulphides giving \$65 to \$110 per ton have been mined. New men and new methods will secure the free gold from the upper workings, while the rich sulphurets will be concentrated, and the Chlorination Works at Mineral City will secure the gold which was formerly lost in the tailings because of insufficient knowledge of the process.

Slate Hill Gold Mine

Formerly a part of the "Luce" property on the southwest extension, the "Slate Hill" Mine was worked contemporaneously with the former. It has been developed to a depth of 150 feet. The mill and shaft houses are of recent construction and equipped with more modern appliances. Assays from former operations show variously from \$13.50 to \$475 per ton. The veins are in many places even wider than those in the "Luce" Mine, and sulphurets of great richness come in at the lowest openings. The extreme fineness of the gold has been a bar to the complete success which should have attended the operation of this magnificent property. But the concentrates and tailings will be treated hereafter by the proper process at the Mineral City Reduction Works, under the supervision of experts who thoroughly understand the treatment of this class of ores.

The Lett Mine

Situated less than one mile northeast of Mineral City and adjoining the famous "Arminius" Pyrites Mine, is the "Lett" Mine, which has been developed successfully but not yet operated. At a depth of 38 feet sulphurets were encountered and subsequent development was in auriferous pyrites to the 95-foot level. Cross-cutting was done, which showed the width of vein to be seven feet. The ore carries from \$5 to \$12.50 in gold and a large percentage of sulphur. The mine can be successfully operated in consequence of the erection of a Reduction Works at Mineral City, and the property has

been leased for a term of years by practical men of means. The mining plant is modern in all respects, and capable of furnishing 100 tons of sulphurets per day.

The Goodwin Tract

This tract formerly produced a wealth of placer nuggets and coarse gold and is now the property of the Dominion Chemical and Mining Company, of New York. They own 726 acres of land on which the vein out-croppings can be readily traced for over a mile in length. This property is being developed both on the quartz veins and in pyrititious lenses. A shaft 57 feet deep on one of the latter shows an ore body about nine feet in width, carrying sulphurets to the extent of 15 per cent. The formation is of decomposed slates, assaying from \$5 to \$9.50 per ton, while the concentrated sulphurets assay about \$50. This shaft can be speedily put in operation to contribute at least 50 tons per day of sulphurets to the Mineral City Reduction Works.

Proposed Reduction Plant

The preceding illustrations demonstrate, without further argument, the necessity for constructing a works of this character at so central a point. Already we have shown that a plethora of ores will await the completion of the plant. The character of these ores is such that only crushing, amalgamation, concentrating, and chlorination apparatus are required. There is nothing of a refractory nature which cannot be successfully treated by this method. The ores are rich enough to pay the producer handsomely, and allow a liberal charge for the gold extraction. The instances cited do not include one-half of the properties in the near vicinity which would be reopened if the ores could be treated close at hand. This is the central railroad point for a distance of 20 miles northeast and 25 miles southwest on the same veins, on which are located 50 mines that would find their nearest facilities for the chlorination of sulphurets at Mineral City.

Placer Mining

While we do not advocate placer mining in Virginia as being sufficiently attractive for the investment of large capital, still so much has been already made from Louisa county placers, that this resume of mining operations would be incomplete without a passing reference to them. Below we present a view on "Tinder Flats," a section of flat gravel which has been worked spasmodically at intervals for over 65 years. In early days slave labor was very profitably employed by Jenkins, the former owner, but no persistent work on a

Mineral City Gold

large scale has ever been attempted. Washing on a hundred small streams and branches has been more or less successful, and is still carried on at certain seasons each year. The chief value of these deposits has proved to be their unfailing indication of the presence of paying veins, and materially assisted in their location. The numerous vein outcroppings, exposed surface rock, and abundant quartz float, over the entire section of a five-mile radius, would furnish thousands of tons of free milling quartz that might be profitably treated at the Mineral City Reduction Works.

The Crenshaw Sulphur Mine

The "Sulphur" Mine has produced an enormous tonnage for many years, and leads all other mines in output. Located about four miles from Mineral City, it is also on a branch of the Chesapeake and Ohio Railway extending to Tinder Flats. Being under control of a close corporation, it is not so accessible for the data which would prove highly interesting reading if obtainable.

Should ores from any of the mines which we shall utilize cease to be profitable for the extraction of the gold, silver, and copper alone, it will be a part of the original plan of this corporation to so construct our plant that acid making can easily be carried on simultaneously with the reduction of richer ores. This industry has made many fortunes for Virginia companies, and offers great inducements for the location of works so near the base of supply.

Fire Clay Deposits

There is a great variety in the clay deposits adjacent to Mineral City, and enormous beds of unusual excellence are in easy reach. One especial tract contains a large acreage underlaid with fire clay of wonderful properties. Composed of 50 per cent silica and 42 per cent alumina, there is no waste matter in the remaining portion. Severest tests have been applied to samples from this property, the result of which has encouraged the owners to associate themselves with expert, practical workers of the material, and a plant is soon to be established in Mineral City for the manufacture of fire bricks, fire-box linings, coke-oven casings, and fire-proof building material. This syndicate has secured several tracts, containing a variety of other clays which are perfectly adapted to the making of pressed brick, common brick, drain tile, hearth tiling, and terra cotta work. Nearness to navigation at Richmond, on the James River, will permit the profitable shipment of clay in bulk to distant markets, when desirable. Virginia pressed brick, of a rich cream color and fine in texture, are being shipped to great distances throughout the country today. The clay near Mineral City possesses all the qualities neces-

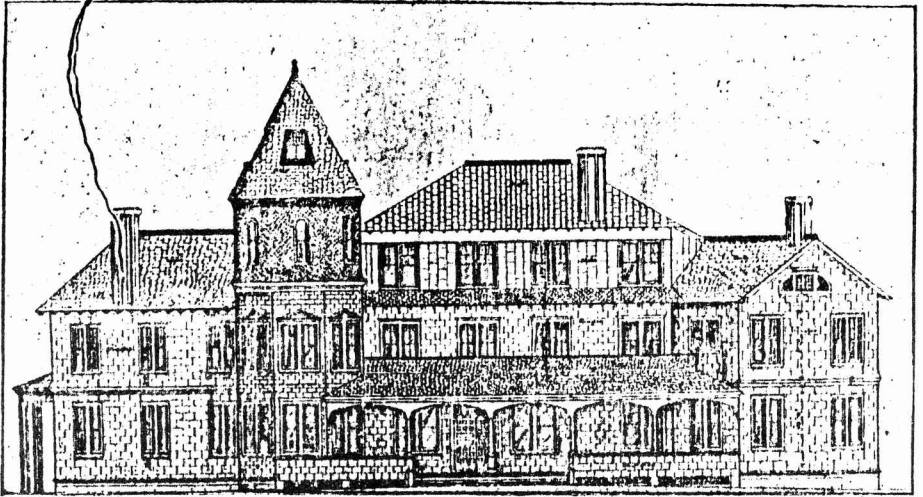
sary to make the finest article of this class which has yet been produced in the State. The operations of this company must be very beneficial to the interests of Mineral City, not only by the employment of a large force, but the fame of her manufactures in this line will add greatly to the prestige of the locality.

Louisa County

The vast mineral resources of Louisa county are by no means her only attractive features. In addition to the minerals already treated upon are to be found valuable and unusual deposits of sheet mica, manganese, plumbago (wonderfully pure and abundant), lead, and magnetic, specular, and hematite ores of iron in quantity. Abundance of building stone, including many varieties of granite, is easily available. Much valuable timber remains in its original state, and pine forests are here which have never been lumbered. Hickory, oak, walnut, and other hard woods abound, and will be in great demand as the result of the various operations now contemplated by the numerous mines and the city's development. That portion of the soil devoted to agricultural purposes is as rich as any to be found in Virginia, and much of it is especially adapted to the culture of tobacco. Louisa county tobacco commands the highest market price, and is eagerly sought for by Richmond buyers. Louisa county's claims to prominence are founded on the solid rocks of commercial fact. Mineral City is the natural location for the metropolis of the county.

Residential Advantages

Mineral City's attractiveness is not altogether confined to its business opportunities. The altitude is the highest here to be found between the Blue Ridge Mountains and the sea. The soil drains naturally, so that even after heavy rains surface water soon disappears. There is no stagnant water, and malaria has no abiding-place. The climate is remarkably equable; no severe cold or deep snows ever to contend with, and the summer climate is so delightful that many residents of Richmond, Norfolk, Portsmouth, Newport News, &c, spend the heated term at and near Mineral City. Magnificent woods, stretching away for miles in every direction from the very limits of Mineral City, furnish all the allurements necessary for those who seek to spend a summer amid quiet pastoral scenes. Numerous springs of purest water, many of them possessing medicinal properties of great efficacy in stomach troubles, are found in and near the city. Present accommodations are not one fourth large enough to provide for the annual applicants. To meet this deficiency the Company proposes to erect first-class hotel buildings on such a



FRONT ELEVATION OF PROPOSED HOTEL.

Hotel proposed to be built in Mineral by the Virginia Reduction Works and Mining Company, as presented in "Mineral City Gold."

plan that extensions are feasible at any time. This venture will be handled in a conservative way, simply providing at the outset the actual requirements in a modest manner, at no great outlay. A view is shown on second cover page of front elevation for proposed building, for which the plans are now in hand. The company will also be willing to undertake the construction of dwellings in behalf of non-residents who desire their plans executed but have not the personal time to spare for supervision. The Company proposes to erect, as demand actually occurs, cottages adjacent to the hotel for the accommodation of families who will be patrons of the hotel refectory, thus increasing materially the guest capacity at a minimum cost.

The business of Louisa county is certain to centralize in Mineral City within a very short space of time, and as it is the natural and geographical centre as well, it is only natural that the county seat will ere long be transferred to the place where it should have originally been located. Steady, rapid, and substantial growth is positively assured. The town-site landed possessions of this Company, embracing about 2,100 lots, are among their most valuable assets.

From the Investment Standpoint

The preceding brief enumeration of those natural elements in Louisa county, which only require the operation of plans for their development (now well under way) to produce enormous wealth, fully emphasizes the solidity of the financial proposition herewith presented.

A Reduction Works is absolutely needed as soon as it can be built, and several months' supply of profitable ores will be stored against its completion. The risk is nil, profit sure, and volume of business all that can be desired. Profitable from the start, the business may be enlarged to any practical extent and still find a steadily-increasing supply of ores. Successful operation of one mine always assures the development of at least two others.

One of the most important probabilities has not yet been touched upon: The principal veins of mineral which traverse this section of country cross in their direct lines the town-site properties of this Company. Surface rights only will be sold for residence and business purposes. *All mineral rights on this 400-acre tract will be reserved for the benefit of our stockholders.* The successful operation of mines adjacent to the property, both northeast and southwest of the city, will locate with absolute certainty the veins on the lands of the Company. Thus all expenses of general exploration will be avoided. The mineral possessions of the Company may be developed at an opportune time with remarkably small expense. A single shaft, and cross-cut tunnels, at a very shallow depth, would determine their value. The power and buildings of the Reduction Works can be utilized for sinking this shaft and necessary hoisting and pumping. The works will be purposely located in a section of the city most favorable to these operations. In all probability Mineral City mines will prove as rich as any of the neighboring ones. The capital sought is ample for the purposes outlined. Conservatism and the greatest caution will be employed in its investment. The Company's experts will carefully mature each plan before any operation is begun. One thing at a time, and that well done, about covers the intention of the management. The capitalization is very moderate considering the assets and prospects of the Company. This is one of the few propositions which can be satisfactorily demonstrated as a financial success within the first year of its operation.

Virginia Reduction Works and Mining Company,

PRINCIPAL OFFICE: MINERAL CITY, VA.

CAPITAL STOCK, \$1,000,000. SHARES, \$10 EACH.

OFFICERS:

R. H. ROSE, President.
WALTER L. BISHOP, Vice-President.
H. B. KIRKWOOD, Secretary.
WM. R. KEESE, Treasurer.

DIRECTORS:

R. H. ROSE, Richmond, Va.
W. L. BISHOP, Mineral City, Va.
HENRY FROELING, Richmond, Va.
WM. R. KEESE, New York, N. Y.
WM. FLAY, New York, N. Y.
W. F. ROBERTS, New York, N. Y.
ARTHUR GRAY, London, Eng.
W. J. COLEMAN, Mineral City, Va.
H. B. KIRKWOOD, New York, N. Y.

Reproduction of the first page of "Mineral City Gold."